



*Raske
van der Meijde*



PUMPS



TOILETS



TANKS



VALVES



Quality & Care

Since 1969 RM69 produces a vast range of toilets and pumps for recreational and professional ship-building as well as for the after market.

More than 30 years of experience can be found in a range of marine toilets; from a manual standard type until a sophisticated "de luxe" electric unit toilet and also a complete range of manual or electric bilge pumps.

Reliability, durability and quality are the key words which have guided the RM69 crew through the years. RM69 has importers/distributors in more than 14 countries throughout Europe and has importers in the United States of America, South America, Asia and Australia as well. These companies do not only stock and sell the complete product, they also carry

a great assortment of spare parts. Therefore in case of failure of one of the RM69 products a fast supply of parts is guaranteed for boat builder and end user alike.

This catalogue shows a complete survey of the RM69 assortment. It also states all technical information needed for proper installation and operation. Each product is covered by a list with full descriptions of all relevant spares and order numbers. This catalogue is therefore a useful tool to help the boat builder to make the right product choice and to help the retailer to advise his customers in the right way.

The RM69 team

Contact

Raske & van der Meyde

Poel 11
1713 GL Obdam
The Netherlands

P. +31 (0)85 876 97 91
E. info@rm69.com

For more information about our products or our distribution network we suggest you to visit our website:
www.rm69.com



Marine Toilet Sealock	Page 4
Marine Toilet	Page 5
Bayonet Catch Toilet	Page 6
Electric Unit Toilet	Page 7
Marine Toilet Electric	Page 8
Conversion Set	Page 9
Sealock Facelift Set	Page 10



Electric Bilge/Waste Pump	Page 11
Electric Bilge/Shower Drain Pump	Page 12
Bilgepump Senior A	Page 13
Bilgepump Senior B	Page 14
Bilgepump Junior	Page 15



Buffertank	Page 16
Waste Holding Tank 90 ltr.	Page 17
Waste Holding Tank 30 ltr.	Page 18
Wastetanks 40, 50, 60 & 80 ltr.	Page 19



Split-up Valves	Page 20
Non return valve / seatsaver	Page 21



Technical Specifications	Page 22
--------------------------	---------



Description

The RM sealock toilet, which can be installed below and above the waterline, is the logical successor of the RM standard toilet, for many years well known all over the world. The in- and outlet of the RM SEALOCK toilet can, contrary to other marine toilets, completely locked, if the toilet is not being used. This gives extra security against incoming water, especially when the toilet is installed below the waterline. The sealock toilet is supplied with a self priming handpump which, depending of the space availa-

ble, can be installed at the right or left side of the bowl.

The sealock toilet can be supplied with standard or household type porcelain bowl and white plastic or wooden seat and cover. All parts are made of corrosion resistant materials.

Note:

Faulty hoses or blockage between toilet and seasocks can also cause flooding. Therefore RM69 advises to close your seasocks when not on board or at sleep.

Ordernumbers

011	Sealock toilet	standard bowl	ABS seat and cover, white
012	Sealock toilet	standard bowl	Wooden seat and cover, white
013	Sealock toilet	household type bowl	Wooden seat and cover, white

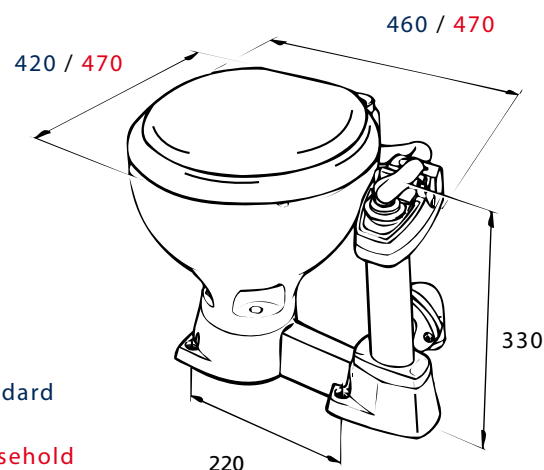
Accessories

Buffertank 25 ltr.	page 16
Waste holding tank 90 ltr.	page 17
Waste holding tank 30 ltr.	page 18
Wastetanks 40, 50, 60 & 80 ltr.	page 19
Split-up valves	page 20
Non return valve	page 21
Seatsaver	page 21

Technical specifications

Page 24

Material bowl	Porcelain
Material pump and base	ABS
Diameter inlet	¾" (20 mm)
Diameter outlet	1½" (38 mm)



Sizes standard

Sizes household



Description

Compact model with self-priming hand pump for below or above waterline installation. Will be supplied with standard or household type porcelain bowl and white plastic or wooden seat and cover. Simple installation. All parts are made of corrosion resistant materials. Pump handle at choice in red or white.

Ordernumbers

101.W	Standard toilet - standard bowl	- ABS seat and cover (white)	- White handle
101.R	Standard toilet - standard bowl	- ABS seat and cover (white)	- Red handle
102.W	Standard toilet - standard bowl	- Wooden seat and cover (white)	- White handle
102.R	Standard toilet - standard bowl	- Wooden seat and cover (white)	- Red handle
103.W	Standard toilet - household type bowl	- Wooden seat and cover (white)	- White handle
103.R	Standard toilet - household type bowl	- Wooden seat and cover (white)	- Red handle

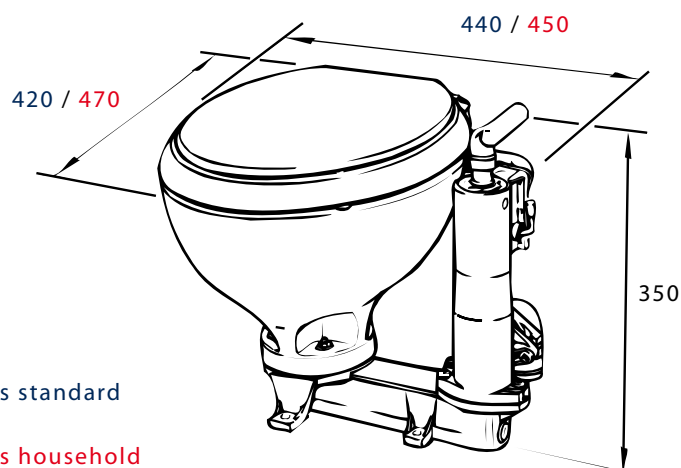
Accessories

Buffertank 25 ltr.	page 16
Waste holding tank 90 ltr.	page 17
Waste holding tank 30 ltr.	page 18
Wastetanks 40, 50, 60 & 80 ltr.	page 19
Split-up valves	page 20
Non return valve	page 21
Seatsaver	page 21

Technical specifications

Page 25

Material bowl	Porcelain
Material pump and base	ABS
Diameter inlet	¾" (20 mm)
Diameter outlet	1½" (38 mm)





Description

This light weight manual toilet has a self-priming hand pump for below or above waterline installation. The toilet is supplied with a ABS bowl which is fixed on the base by a bayonet catch.

This makes installation easy and efficient. The bowl can easily be removed for maintenance or inspection. Besides that, this toilet is one of the light weighted on the market today. (Approx 3 kilos).

An excellent option where weight is an important factor. Will be supplied with white ABS seat and cover. All parts are made of corrosion resistant materials. Pump handle at choice in red or white.

Ordernumbers

014.W	Bayonet Catch Toilet Sealock	- ABS bowl	- ABS seat and cover	- White handle
014.R	Bayonet Catch Toilet Sealock	- ABS bowl	- ABS seat and cover	- Red handle
104.W	Bayonet Catch Toilet Standard	- ABS bowl	- ABS seat and cover	- White handle
104.R	Bayonet Catch Toilet Standard	- ABS bowl	- ABS seat and cover	- Red handle

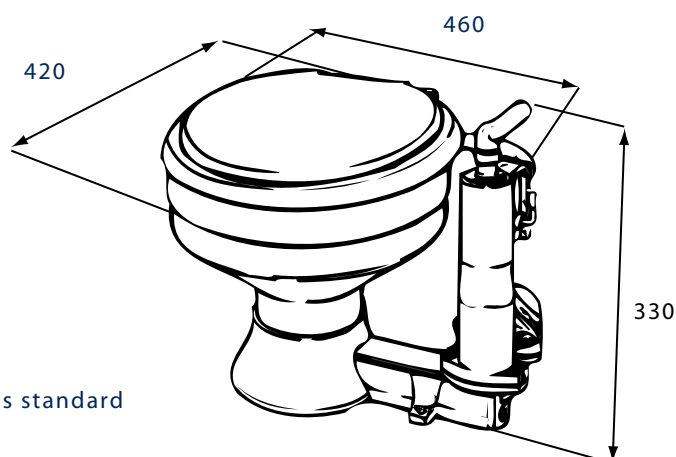
Accessories

Buffertank 25 ltr.	page 16
Waste holding tank 90 ltr.	page 17
Waste holding tank 30 ltr.	page 18
Wastetanks 40, 50, 60 & 80 ltr.	page 19
Split-up valves	page 20
Non return valve	page 21
Seatsaver	page 21

Technical specifications

Page 26

Material bowl	Porcelain
Material pump and base	ABS
Diameter inlet	3/4" (20 mm)
Diameter outlet	1 1/2" (38 mm)





Description

Luxurious toilet with separate electric membrane pump, which can be installed outside the toilet room.

Operation through a wall mounted switch unit.

The big sized electrical pump is of a low noise type and has a low power consumption.

Thanks to the oversized membrane, as well as the oversized inlet and outlet valves, handling of the toilet waste is without any problem.

The pump unit is built on a compact aluminium frame, on which the relays and the valve for the freshwater pump are built as well.

Flushing through on board pressure system or selfpriming pump.

The electric unit toilet will be supplied with either a standard bowl or a household type bowl. A white wooden seat and cover is included.

The pump unit is supplied with a additional non return valve.

Ordernumbers

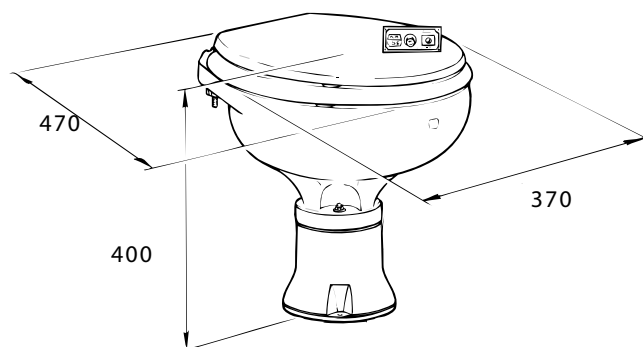
9055.12	Electric unit toilet	- Plastic bowl	- Plastic seat and cover white	- 12 DC.V.
9055.24	Electric unit toilet	- Plastic bowl	- Plastic seat and cover white	- 24 DC.V.
9056.12	Electric unit toilet	- Standard bowl	- Wooden seat and cover white	- 12 DC.V.
9056.24	Electric unit toilet	- Standard bowl	- Wooden seat and cover white	- 24 DC.V.
9057.12	Electric unit toilet	- Household type bowl	- Wooden seat and cover white	- 12 DC.V.
9057.24	Electric unit toilet	- Household type bowl	- Wooden seat and cover white	- 24 DC.V.

Accessories

Waste holding tank 90 ltr.	page 17
Waste holding tank 30 ltr.	page 18
Wastetanks 40, 50, 60 & 80 ltr.	page 19
Split-up valves	page 20
Non return valve	page 21
Seatsaver	page 21

Technical specifications

Material bowl	Porcelain
Material base	ABS
Material pump housing	Linear polyester
Material membrane and valves	Nitril rubber
Diameter inlet	¾" (20 mm)
Diameter outlet	1 ½" (38 mm)
Fuse	12 DC.V. / 16 AMP
	24 DC.V. / 10 AMP





Description

Compact model with self-priming double action pump for below or above waterline installation. The waste pump is equipped with a cutter, which cuts the waste before it is discharged through the outlet line. Operation is simple. The switch on the pump must be lightly pressed down to activate the electric pump. Freshwater is coming in and the waste will be discharged by the cutter.

The RM electric toilet can be supplied with a standard or household type porcelain bowl and a white wooden seat and cover. Simple installation. All parts are made of corrosion resistant materials. Lasting pump construction. To be supplied in 12 volt or 24 volt.

Ordernumbers

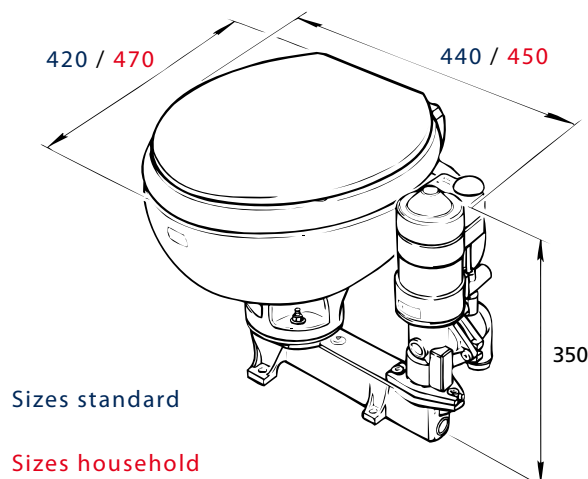
107	Electric toilet	- standard bowl	- Wooden seat and cover white	- 12 DC.V.
108	Electric toilet	- standard bowl	- Wooden seat and cover white	- 24 DC.V.
109	Electric toilet	- household type bowl	- Wooden seat and cover white	- 12 DC.V.
110	Electric toilet	- household type bowl	- Wooden seat and cover white	- 24 DC.V.

Accessories

Waste holding tank 90 ltr.	page 17
Waste holding tank 30 ltr.	page 18
Wastetanks 40, 50, 60 & 80 ltr.	page 19
Split-up valves	page 20
Non return valve	page 21
Seatsaver	page 21

Technical specifications

Material bowl	Porcelain
Material pump and base	ABS
Material impeller	Nitril rubber
Diameter inlet	¾" (20 mm)
Diameter outlet	1 ½" (38 mm)
Fuse	12 DC.V. / 25 AMP
	24 DC.V. / 15 AMP





Description

With an electric conversion unit a RM manual toilet can be converted into a full electric toilet. The conversion unit is a compact model with a self-priming double acting pump for below or above waterline installation. The pump is equipped with a cutter, which cuts the waste before it is discharged through the outlet line.

Operation is simple. The switch on the pump must be lightly pressed down to activate the electric pump. Freshwater is coming in and the waste will be discharged through the cutter. All parts are made of corrosion resistant materials. Lasting pump construction.

To be supplied in 12 or 24 DC.Volt.

Ordernumbers

201	Electric conversion unit - 12 DC.V.
202	Electric conversion unit - 24 DC.V.

Technical specifications

Page 27

Material housing	ABS
Material impeller	Nitril rubber
Diameter inlet	¾" (20 mm)
Diameter outlet	1½" (38 mm)
Fuse	12 DC.V. / 25 AMP
	24 DC.V. / 15 AMP



Description

This set converts a traditional RM marine toilet, or other marine toilets with similar bowl dimension, into a Sealock toilet. The kit contains all parts which are used in the Sealock toilet, except the bowl, the seat and cover. Installation is simple.

Ordernumbers

580 Sealock Facelift

Technical specifications

Material pump and base	ABS
Diameter inlet	¾" (20 mm)
Diameter outlet	1 ½" (38 mm)
Diameter flange	95 mm

Accessories

Waste holding tank 90 ltr.	page 17
Waste holding tank 30 ltr.	page 18
Wastetanks 40, 50, 60 & 80 ltr.	page 19
Split-up valves	page 20
Non return valve	page 21



Description

Electric self priming bilge/waste pump suitable for pumping polluted liquids, such as toilet waste, bilge water, shower water and the contents of waste tanks. Membrane type pump with an 1½" in- and outlet, big enough to let pass solids such as toilet paper and tissues.

Maximum suction height is 3 meters; maximum delivery height is 5 meters. Capacity 40 ltr./min.

The RM electric bilge pump can be installed in any position. All parts are corrosion resistant. Can be supplied with white or black housing and in 12 or 24 volt.

Ordernumbers

310.12	Electric bilge/waste pump	- housing black	- 12 DC.V.
310.24	Electric bilge/waste pump	- housing black	- 24 DC.V.

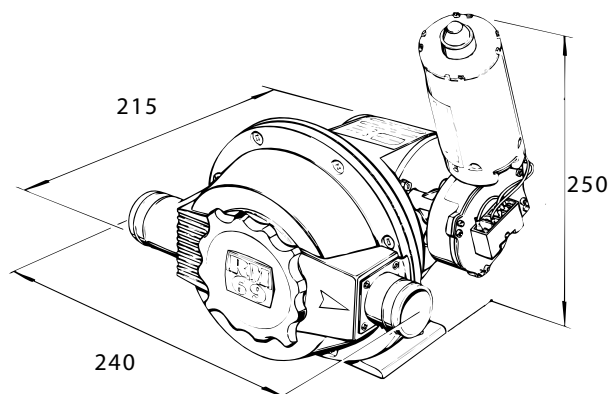
Accessories

Buffertank 25 ltr.	page 16
Wastetanks 40, 50, 60 & 80 ltr.	page 19
Split-up valve 803	page 20

Technical specifications

Page 28

Material motor housing	Epoxy coated aluminium
Material pump housing	Linear polyester
Material membrane and valves	Nitril rubber
Diameter in- and outlet	1½" (38 mm)
Fuse	12 DC.V. / 16 AMP
	24 DC.V. / 10 AMP





Description

Electric self priming shower drain pump suitable for pumping shower water. Membrane type pump with an 1" in- and outlet, big enough to let pass small solids such as soap rests. Maximum suction height is 3 meters; maximum delivery height is 5 meters.

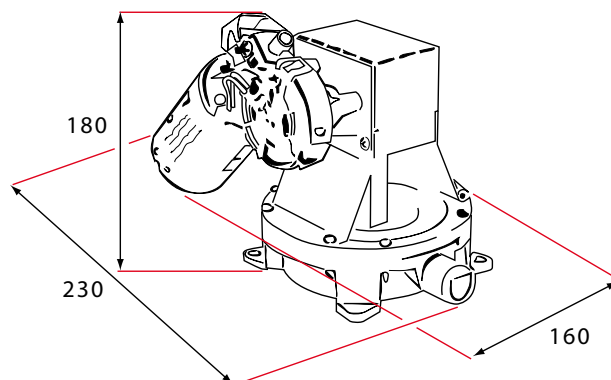
Capacity 40 ltr./min. The RM electric shower drain pump can be installed in each desired position. All parts are corrosion resistant.

Ordernumbers

313.12	Electric bilge/waste pump	- 12 DC.V.
313.24	Electric bilge/waste pump	- 24 DC.V.

Technical specifications

Material motor housing	Stainless steel
Material pump housing	POM
Material membrane and valves	Nitril rubber
Diameter in- and outlet	1" (25 mm)
Fuse	12 DC.V. / 10 AMP
	24 DC.V. / 6 AMP





Description

Strong self priming bilgepump, hand operated. Large capacity to empty holdingtanks and bilges. Bulkhead mounting. Can be installed in any position. Black pump housing, nitril oil resistant membrane and valves.

Capacity: approx. 1 ltr. per stroke. Suction height 4¾ meters, delivery height 5½ meters.

Ordernumbers

302	Bilgepump senior A	- Black pumphousing
-----	--------------------	---------------------

Accessories

Wastetanks 40, 50, 60 & 80 ltr.	page 19
Split-up valve 803	page 20
Non return valve	page 22

Technical specifications

Page 29

Material pump housing	Linear polyester
Material membrane and valves	Nitril rubber
Diameter in- and outlet	1½" (38 mm)



Description

Strong self priming bilgepump, hand operated. Large capacity for emptying wastetanks and bilges. Suitable for wall mounting through bulkhead and for installation below deck. Can be installed in any position. Black pump housing, nitril oil resistant membrane and valves.

Capacity: approx. 1 ltr. per stroke. Suction height 4¾ meters, delivery height 5½ meters

Ordernumbers

303	Bilgepump senior B	- Black pumphousing and black manchetring
303.W	Bilgepump senior B	- Black pumphousing and white manchetring

Accessories

Wastetanks 40, 50, 60 & 80 ltr.	page 19
Split-up valve 803	page 20
Non return valve	page 22

Technical specifications

Page 29

Material pump housing	Linear polyester
Material membrane and valves	Nitril rubber
Diameter in- and outlet	1½" (38 mm)



Description

Strong self priming bilge pump, hand operated. Simple construction, therefore maintenance free. Bulkhead mounting. Can be installed in any position. Black pump housing, nitril oil resistant membrane and valves.

Capacity: approx. ½ ltr. per stroke.

Ordernumbers

301	Bilgepump junior
-----	------------------

Technical specifications

Page 30

Material pump housing	Linear polyester
Material membrane and valves	Nitril rubber
Diameter in- and outlet	1" (25 mm)



Description

Buffertank, capacity 25 ltr. can collect toilet waste when overboard discharging is prohibited or for environmental reasons not desirable. The buffertank is placed around the toilet and can be fixed with the stainless steel clip supplied. The buffertank will in any way not disturb the access and use of the toilet. Supply is inclusive all fittings to connect the tank to the toilet. Supplied as well is a

three way valve. This three way valve will be installed on the existing toilet pump and the user can select with the selection switch where the waste will be pumped to (to the buffer tank or direct overboard). The buffertank can be emptied with the toilet pump or a pump out station.

Ordernumbers

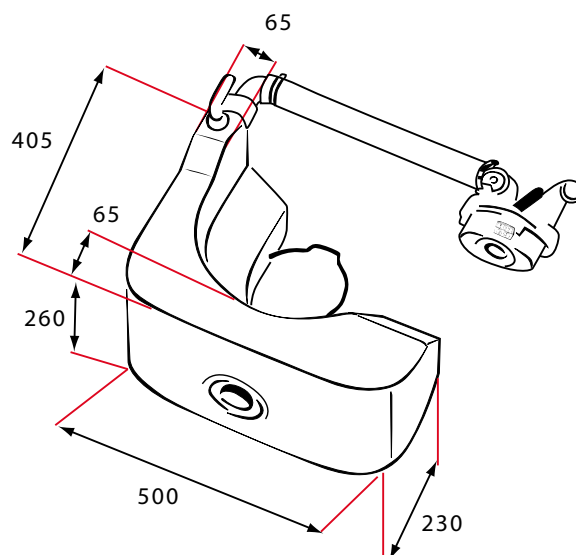
801.N	Buffertank 25 ltr.
-------	--------------------

Accessories

Split-up valves	page 20
Non return valve	page 21

Technical specifications

Material tank and fittings	Polyethylene / nylon
Material Clip	Stainless steel
Diameter ventilation line	3/4" (20 mm)
Diameter in- and outlet	1 1/2" (38 mm)





Description

Waste tank 90 ltr. with integrated Bilge/Waste pump which makes a complete system for a convenient storage and discharge of waste water.

The tank is made of polyethylene and is odour and permeation free which also concerns the rubber fittings used.

The tank is fitted with two discharge outlets. One is for connection to a deckmounted fitting and one is connected to the Bilge/Waste pump for overboard discharge.

RM69 holdingtanks fully comply with the ISO 8099:2000(E) standard.

Ordernumbers

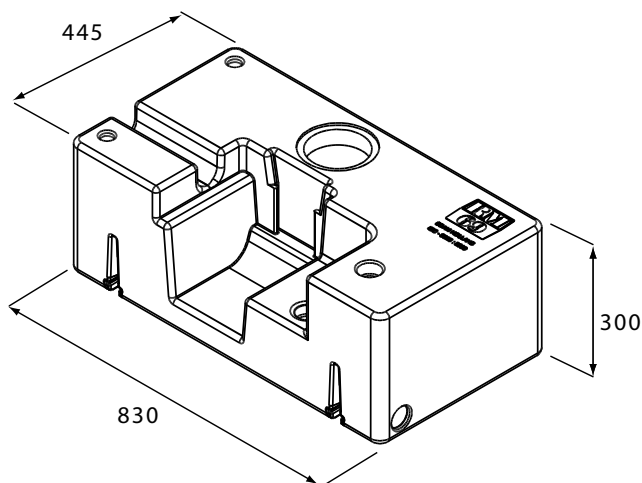
813	Waste holding tank 90 ltr.	- 12 DC.V.
814	Waste holding tank 90 ltr.	- 24 DC.V.

Accessories

Split-up valves	page 20
Non return valve	page 21

Technical specifications

Material tank and fittings	Polyethylene / Nylon and Nitril rubber
Diameter ventilation line	2 x 3/4" (20mm)
Diameter in- and outlet	1 1/2" (38mm)





Description

Buffertank, capacity 30 litres. A tank that is placed above the waterline and is specially designed so it can discharge overboard without using a separate bilgepump on board.

For use in Marinas or when overboard discharging is prohibited or for environmental reasons not desirable you close the outletvalve and discharge

the tank through a deckmounted fitting by a pump-out station. RM69 holding tanks fully comply with the ISO 8099:2000(E)

Ordernumbers

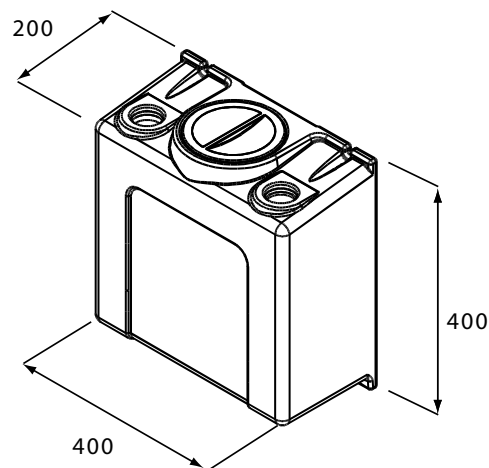
808	Waste tank 30 ltr.
-----	--------------------

Accessories

Split-up valves	page 20
Non return valve	page 21

Technical specifications

Material tank and fittings	Polyethylene / nylon
Diameter ventilation line	¾" (20 mm)
Diameter in- and outlet	1½" (38 mm)





Description

Waste tank 40, 60 or 80 ltr. These waste tanks can be applied when a buffertank, placed around the toilet, is no option and there is no room to built in fixed tanks. These tanks are made of polyethylene and are odour and permeation free. Installation maximum 2 meters from the toilet. A connection set type 830 can be bought separately. The 60 and 80 litre tanks can only be emptied via a wall unit or

a separate pump. However when a two way valve, type 802, is fixed on the toilet pump the waste can either be pumped overboard or to the waste tank. The 40 litre tank can also be emptied overboard through the toilet pump. For this installation a three way valve, type 804, is necessary (see diagram on page 18).

Ordernumbers

810	Waste holding tank	- Capacity 40 ltr.
811.5	Waste holding tank	- Capacity 50 ltr.
811	Waste holding tank	- Capacity 60 ltr.
812	Waste holding tank	- Capacity 80 ltr.
830	Connection set	- For 40, 50 & 60 ltr. tanks
830.0	Connection set	- For 80 ltr. tanks

Accessories

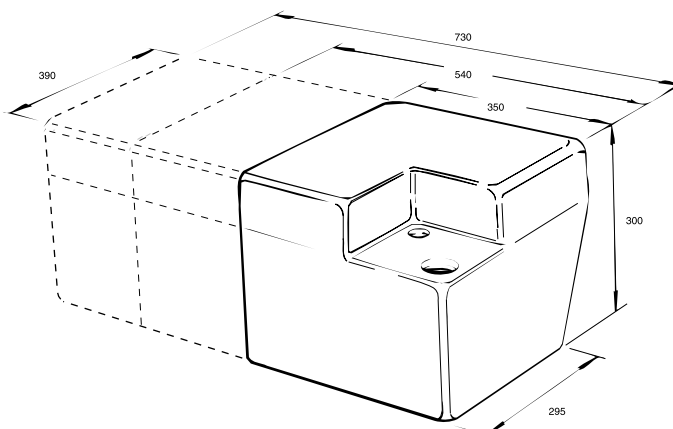
Split-up valves	page 20
Non return valve	page 21

Sizes (length x height x width)

Waste holding tank	40 ltr.	350 x 300 x 390 mm
Waste holding tank	50 ltr.	540 x 280 x 390 mm
Waste holding tank	60 ltr.	540 x 340 x 390 mm
Waste holding tank	80 ltr.	730 x 340 x 390 mm

Technical specifications

Material tank and fittings	polyethylene / nylon
Diameter ventilation line	3/4" (20 mm)
Diameter outlet fittings	1 1/2" (38 mm)





Description

The RM split-up valves are specially designed for installation on a toilet hand pump. However in cases where installation of the 802 model on the toilet pump is not possible, a model for separate mounting (model 803) can be supplied. These valves can be supplied in various models, each model suitable for application in combination with a buffer tank or waste tank; see diagram below.

Durable ABS and stainless steel are taking care for a perfect and care-free operation during a lot of years. The standard models (802 till 804) are supplied with 90° elbow fittings, however they also can be supplied with a straight fittings (model 802/803/804 STR). In under mentioned list is clearly outlined which applications are possible.

Type toilet	Buffertank	Waste tank 40 ltr.	Waste tank 50 / 60 ltr.	Waste tank 80 ltr.
Standard	804 - 804.STR	802/803/804 802/803/804.STR	802/803 802/803.STR	802/803 802/803.STR
Sealock	804 - 804.STR	802/803/804 802/803/804.STR	802/803 802/803.STR	802/803 802/803.STR
Electric	Not possible	803 803.STR	803 803.STR	803 803.STR



Ordernumbers

802	Two way valve; discharge in open water or discharge to the waste tank; elbow 90°.
802.STR	Two way valve; discharge in open water or discharge to the waste tank; straight outlet.
803	Two way valve; discharge in open water or discharge to the waste tank; installation separate from the pump; elbow 90°.
803.STR	Two way valve; discharge in open water or discharge to the waste tank; installation separate from the pump; straight outlet.
804	Three way valve; discharge in open water, discharge to the buffertank or the waste tank (40 ltr. only) and emptying the buffertank or waste tank (40 ltr. only); elbow 90°.
804.STR	Three way valve; discharge in open water, discharge to the buffertank or the waste tank (40 ltr. only) and emptying the buffertank or waste tank (40 ltr. only); straight outlet

Technical specifications

802 / 802.STR - Page 30	803 / 803.STR - Page 31	804 / 804.STR - Page 31
-------------------------	-------------------------	-------------------------



Description

Non return valve prevents toilet and bilge system against flooding.
Hose connection 38 mm.

Ordernumbers

825	Non return valve
-----	------------------



Description

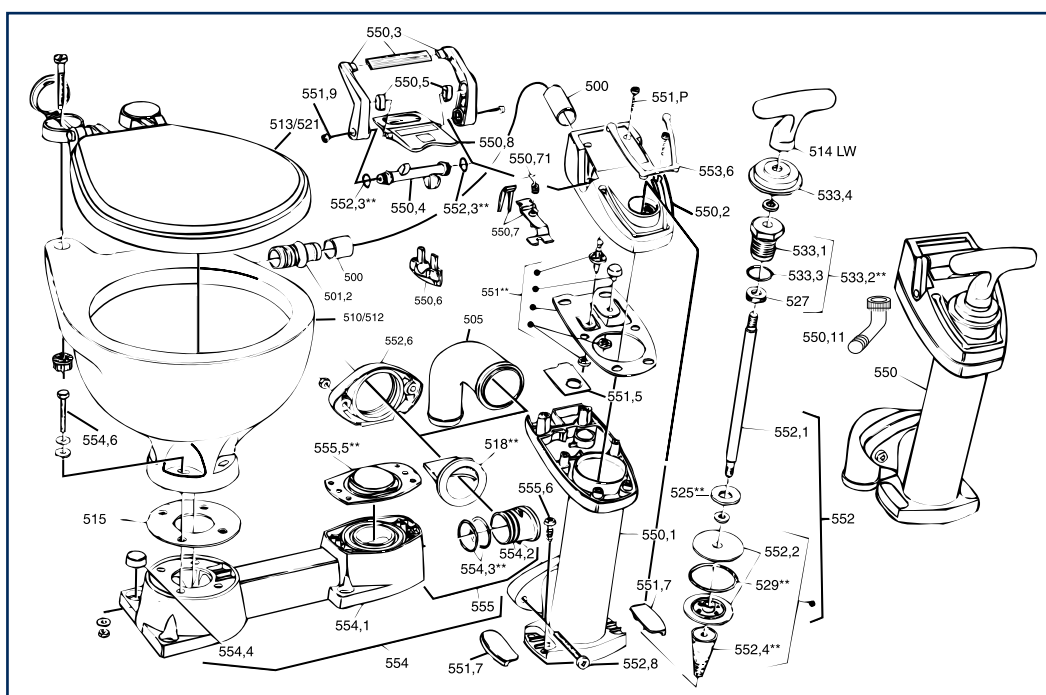
Secures seat and cover from sliding and protects the hinges.

Ordernumbers

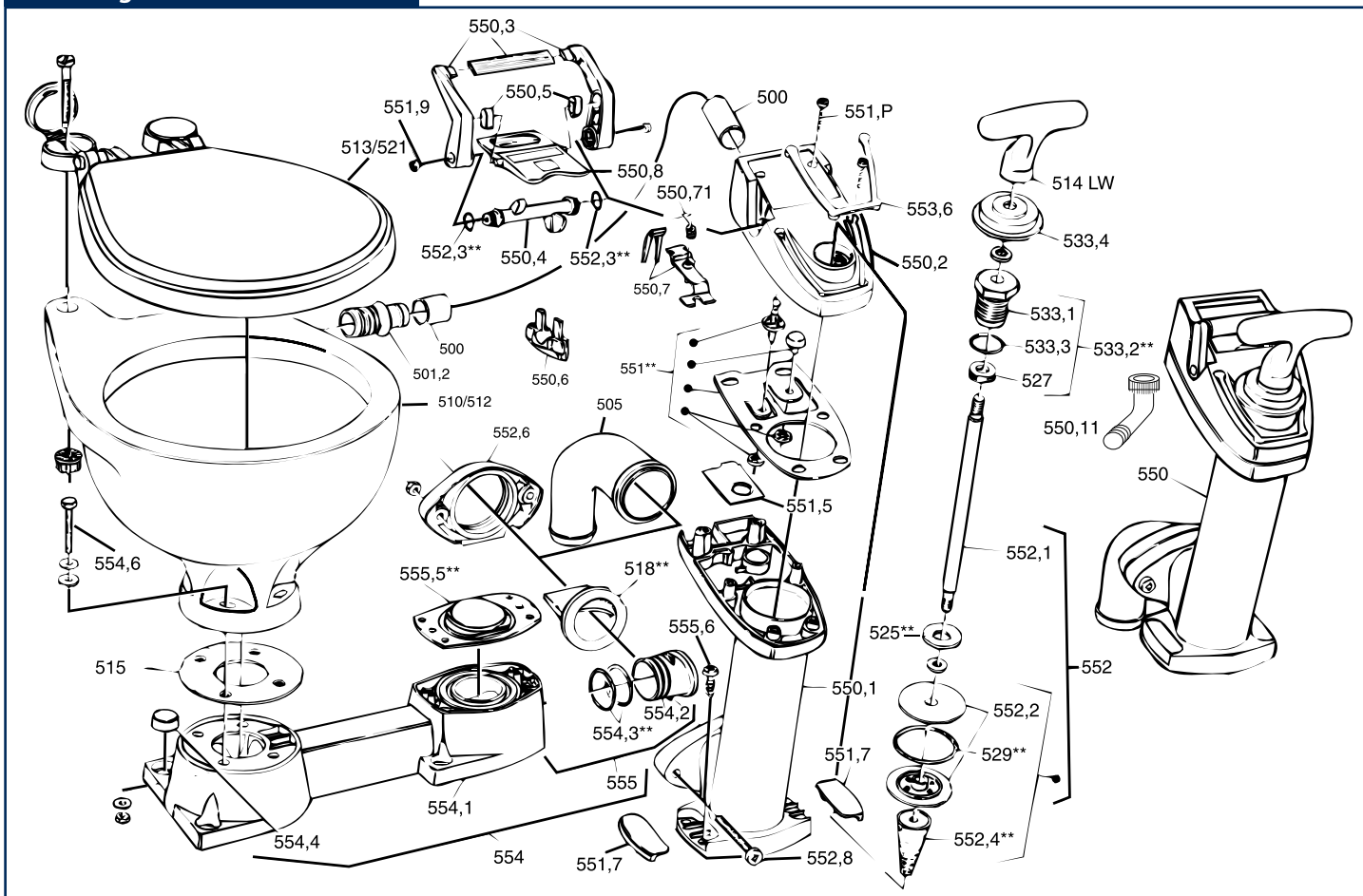
521.1	Seatsaver
-------	-----------



Marine Toilet Sealock	Page 24
Marine Toilet	Page 25
Bayonet Catch Toilet	Page 26
Conversion Set	Page 27
Electric Bilge/Waste pump	Page 28
Bilgepump Senior A	Page 29
Bilgepump Senior B	Page 29
Bilgepump Junior	Page 30
Split-up Valve 802/802.STR	Page 30
Split-up Valve 803/803.STR	Page 31
Split-up Valve 804/804.STR	Page 31



Drawing Marine Toilet Sealock



Parts Marine Toilet Sealock

Partsno. Description

501.2	Hose bowl connection
510	Bowl plug
512	Bowl, household type
513	Seat and cover standard, plastic
514	Handle white or red
518**	Check valve
521	Seat and cover standard, type wood
525**	Ring
532	Seat and cover household, type wood
533.2**	Shaft seal
533.4	Handle cover
550	Complete pump
550.1	Pump housing

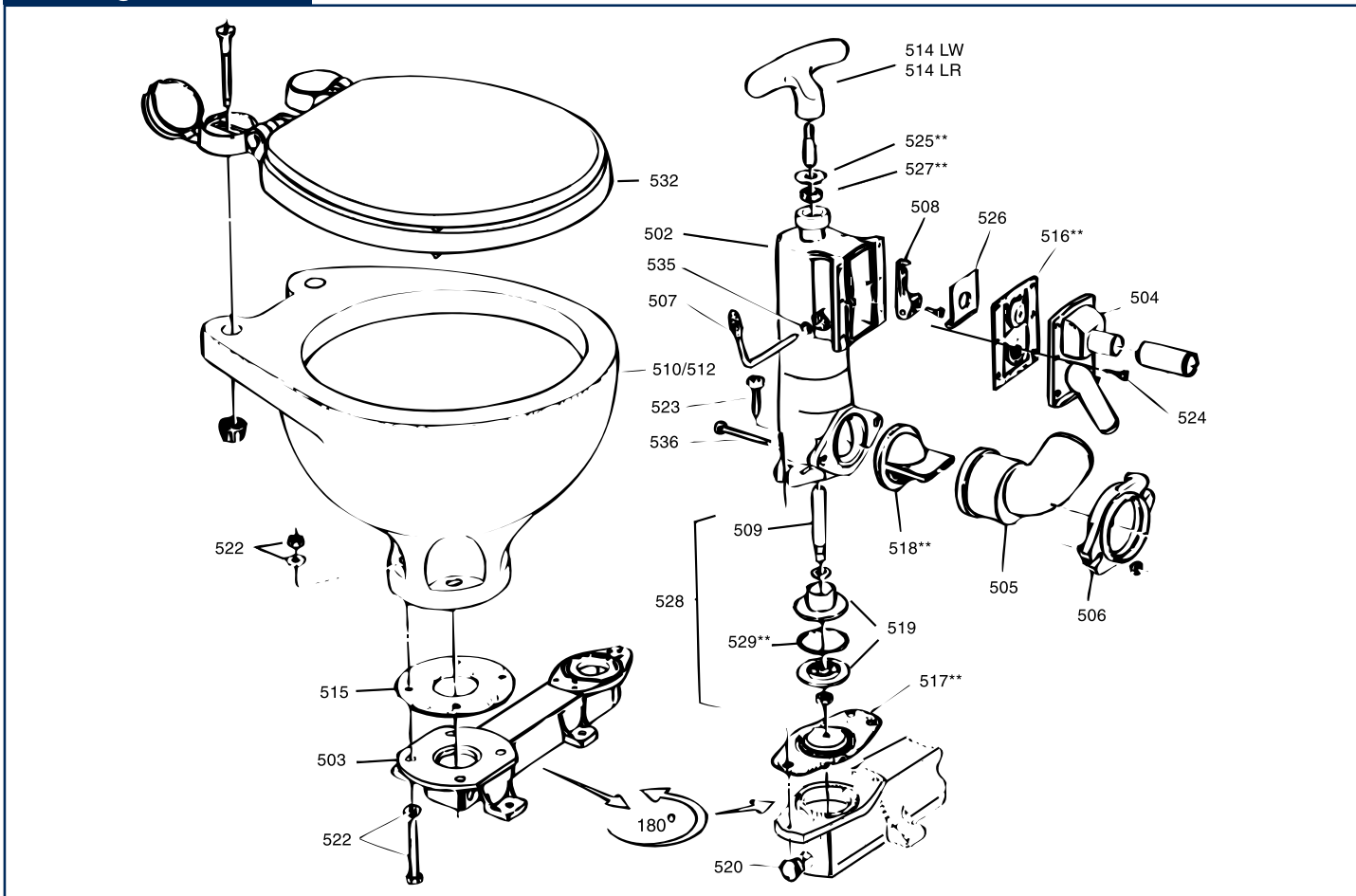
Partsno. Description

550.2	Valve cover
550.3	Lever
550.4	Shaft for lever
550.6	Blocking ring
550.7	Spring for top valve
550.8	Position indicator
550.11	Inlet hose connector
551**	Inlet valve
551.5	Valve plate
551.7	Screw caps
552	Piston rod with piston
529**	Piston ring
552.3**	O-ring for lever

Partsno. Description

552.4**	Blocking cone
505	Outlet elbow
505.str	Straight outlet
552.6	Discharge flange
553.6	Topscrew cover
554	Base, complete
554.3**	O-ring drainplug
554.4	Boltcover
554.6	Bolts for bowl
555	Drain plug complete
515	Bowl gasket
555.5**	Outlet valve
555.6	Screws for pump
560**	Repairkit

Drawing Marine Toilet



Parts Marine Toilet

Partsno. Description

501	Complete pump
502	Pump housing
503	Base
504	Valve cover
505	Discharge elbow
506	Discharge flange
507	Lever
508	Flipper
510	Bowl, small
512	Bowl, household type

Partsno. Description

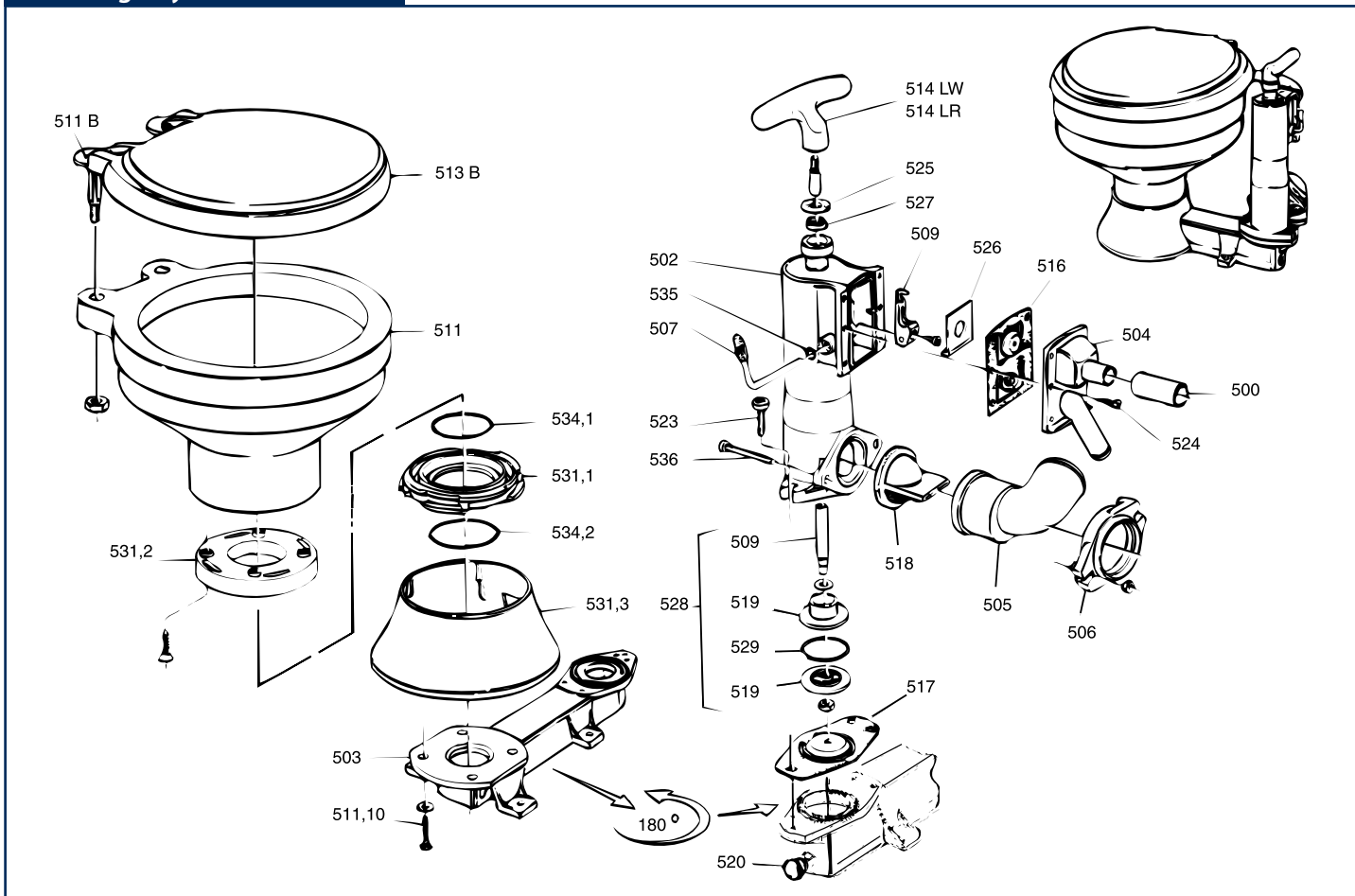
513	Seat and cover, standard plastic
514	Handle, white or red
515	Bowl gasket
516**	Inlet valve
517**	Outlet valve
518**	Check valve
519	Piston house
520	Drain plug
521	Seat and cover, standard wood
525**	Bumper washer

Partsno.

Description

526	Valve plate
527**	Shaft seal
528	Piston rod with piston
529**	Piston ring
532	Seat and cover household
535**	O-ring
530**	Repairkit

Drawing Bayonet Catch Toilet



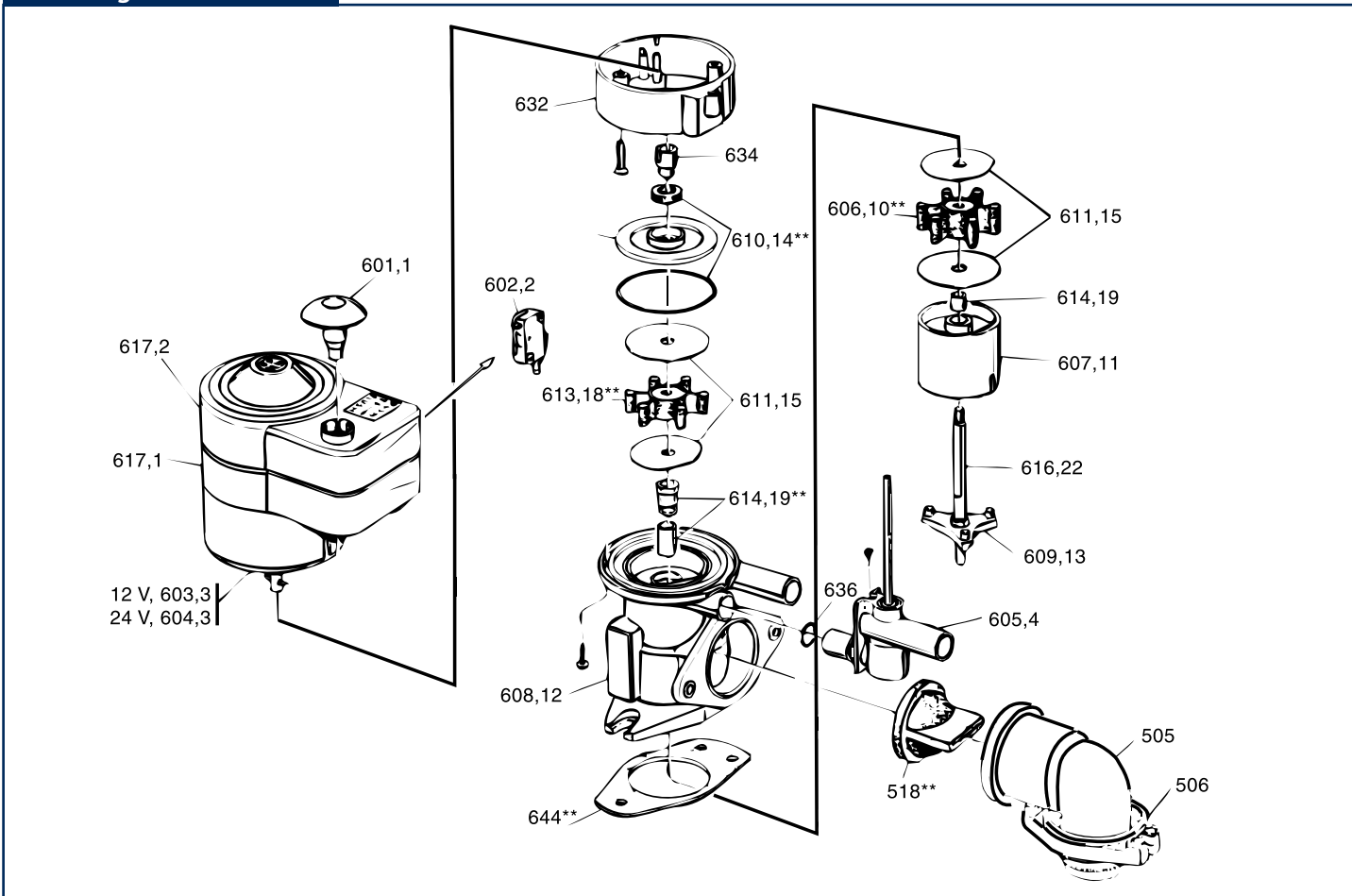
Parts Bayonet Catch Toilet

Partsno.	Description
500	Flush hose
501	Complete pump
502	Pump housing
503	Base
504	Valve cover
505	Discharge elbow
506	Discharge flange
507	Lever
508	Flipper
509	Piston shaft
511	Bowl ABS Bayonet
511.8	Hinges ABS Seat
511.10	Screw set bayonet base

Partsno.	Description
513.B	ABS seat bayonet bowl
514	Handle, white or red
516**	Inlet valve
517**	Outlet valve
518**	Check valve
519	Piston house
520	Drain plug
523	Pump to base bolts (set)
524	Valve housing screws (set)
525	Bumper washer
526	Valve plate
527**	Shaft seal
528	Piston rod with piston

Partsno.	Description
529**	Piston ring
531.1	Bayonet base sparepart
531.2	Bayonet top sparepart
531.3	Bayonet cover
534.1	O-ring bayonet bowl
534.2	O-ring bayonet to base
535	O-ring
536	Boltset elbow
530**	Repairkit

Drawing Conversion Set



Parts Conversion Set

Partsno. Description

505	Discharge elbow
506	Discharge flange
518**	Check valve
602.2	Switch + holder
603.3	Motor 12 DC.V.
604.3	Motor 24 DC.V.

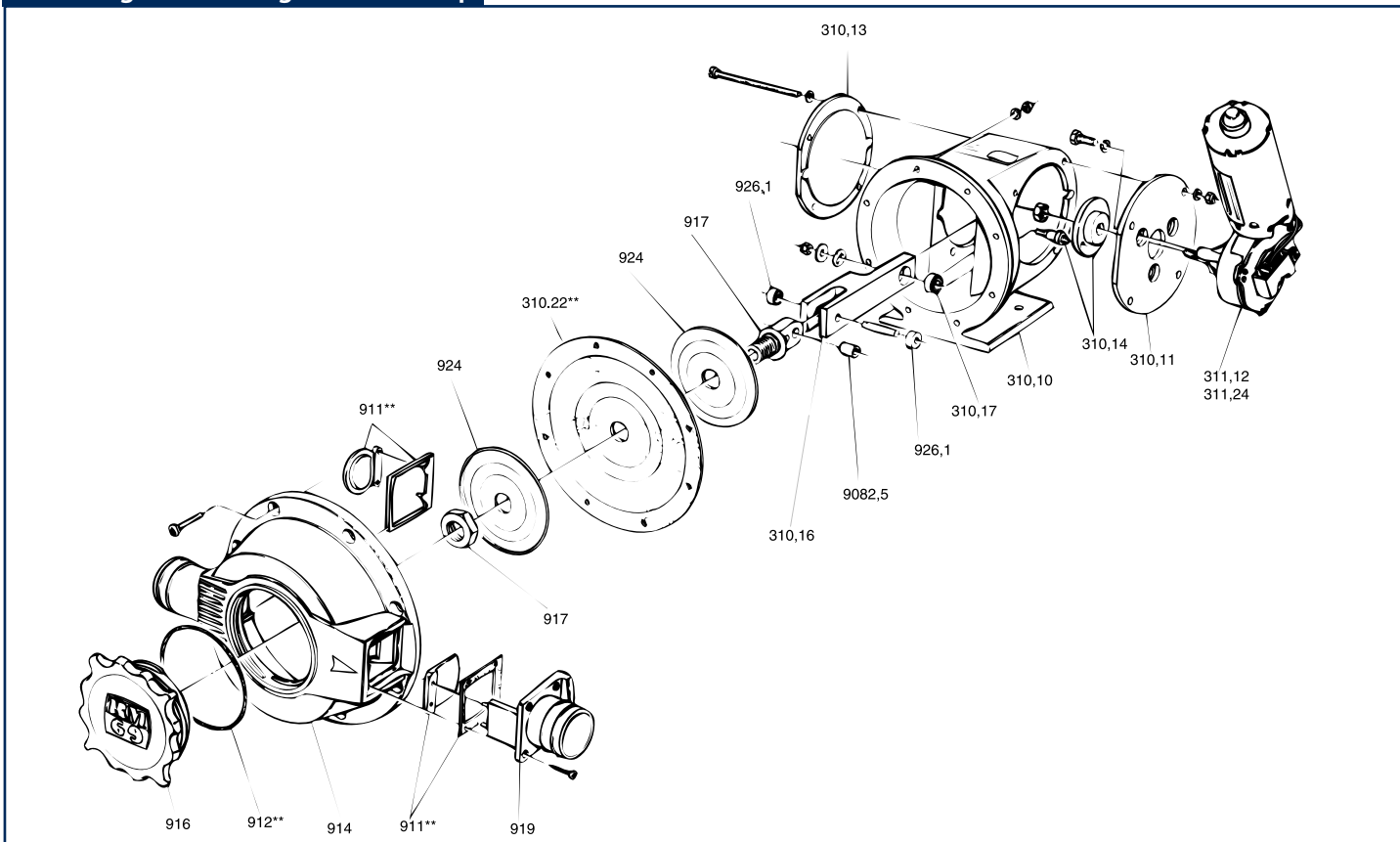
Partsno. Description

605.4	Control valve
606.10**	Impeller discharge
608.12	Pump house
609.13	Cutter
610.14**	Top seal

Partsno. Description

613.18**	Impeller inlet
614.19**	Bearings
644**	Gasket
651	Pump housing complete
625**	Repairkit

Drawing Electric Bilge Waste Pump



Parts Electric Bilge Waste Pump

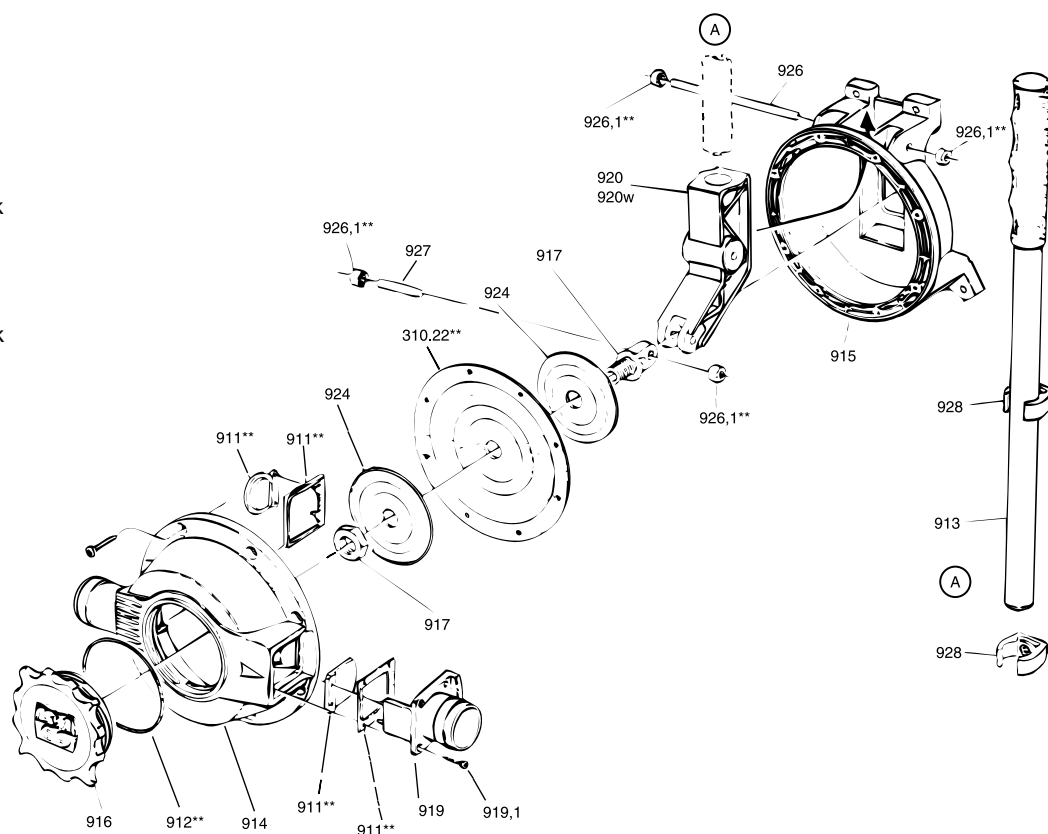
Partsno.	Description	Partsno.	Description	Partsno.	Description
310.10	Motor house black	311.12	Motor 12 DC.V.	917	Membrane bolt
310.11	Motor holder black	311.24	Motor 24 DC.V.	919	Outlet valve cover
310.13	Inspection cover black	908.25	Bolt bearing	924	black
310.14	Cranc disc	911**	Valve set	926.1	Membrane disc
310.16	Connection fork	912**	O-ring	927	Pinholder (set)
310.22**	Membrane	914	Pump body black		Pin 36 mm.
		916	Screw cap black	921**	Repairkit

Drawing & Parts Bilgepump Senior A

Partsno. Description

- 310.22** Membrane
- 911** Valve set
- 912** O-ring
- 913 Handle
- 914 Pump body black
- 915 Pump base black
- 916 Screw cap black
- 917 Bolt + nut
- 919 Valve cover black
- 920 Lever

- 921** Repairkit

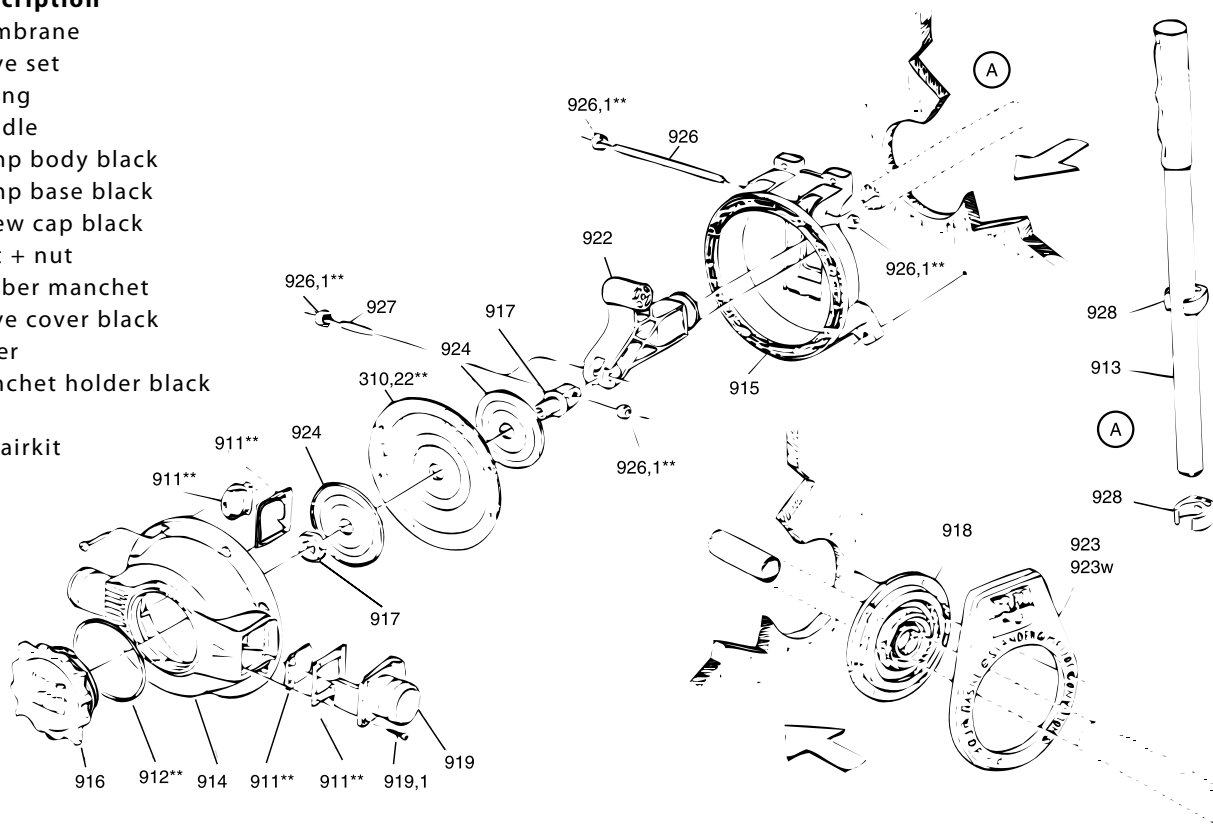


Drawing & Parts Bilgepump Senior B

Partsno. Description

- 310.22** Membrane
- 911** Valve set
- 912** O-ring
- 913 Handle
- 914 Pump body black
- 915 Pump base black
- 916 Screw cap black
- 917 Bolt + nut
- 918 Rubber manchet
- 919 Valve cover black
- 922 Lever
- 923 Manchet holder black

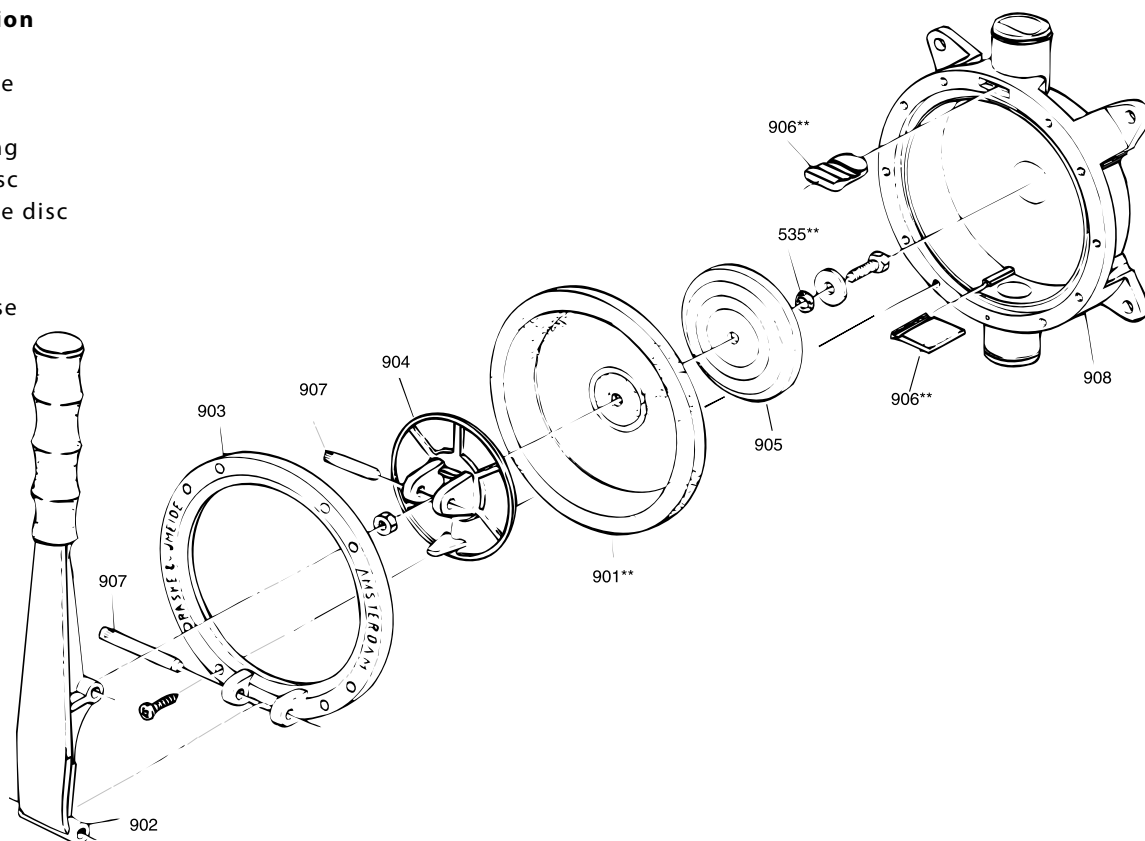
- 921** Repairkit



Drawing & Parts Bilgepump Junior

Partsno.	Description
----------	-------------

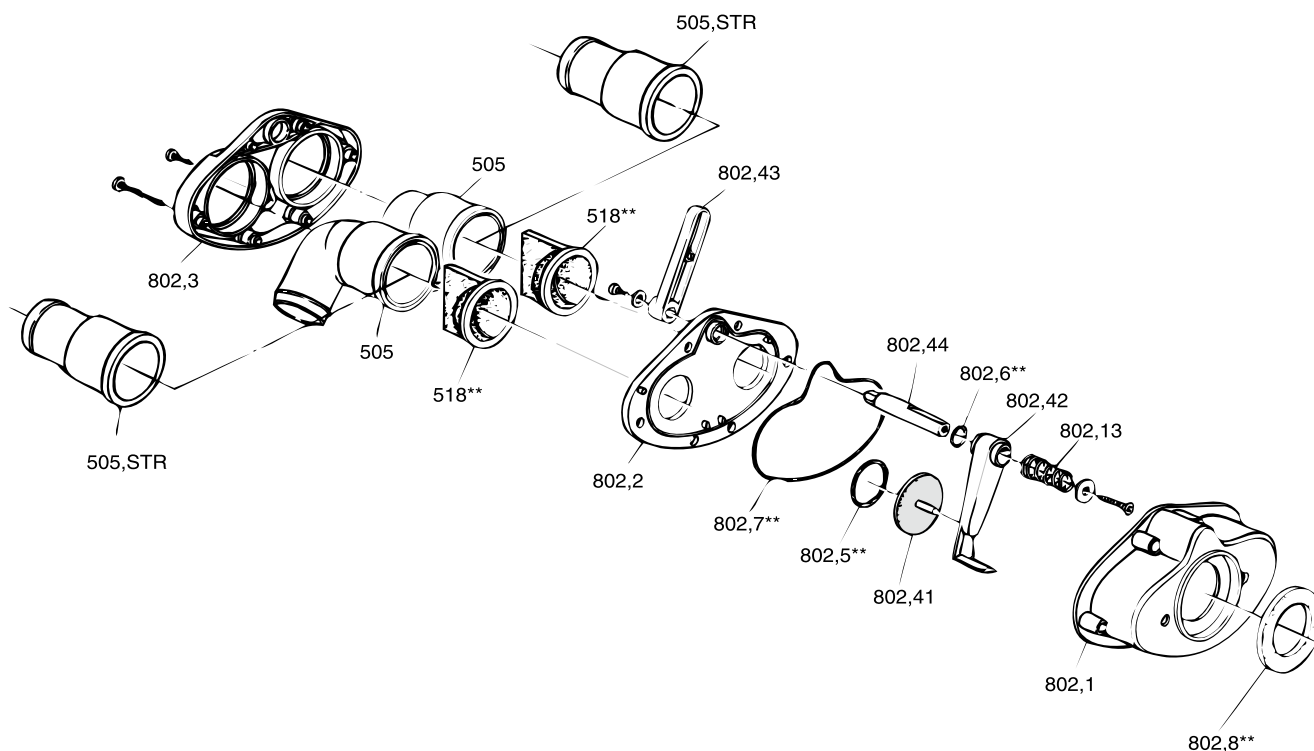
535**	Seal
901**	Membrane
902	Handle
903	Clamp ring
904	Swivel disc
905	Membrane disc
906**	Valve set
907	Pins
908	Pump base
909**	Repairkit



Drawing & Parts Split-up Valve 802/802.STR

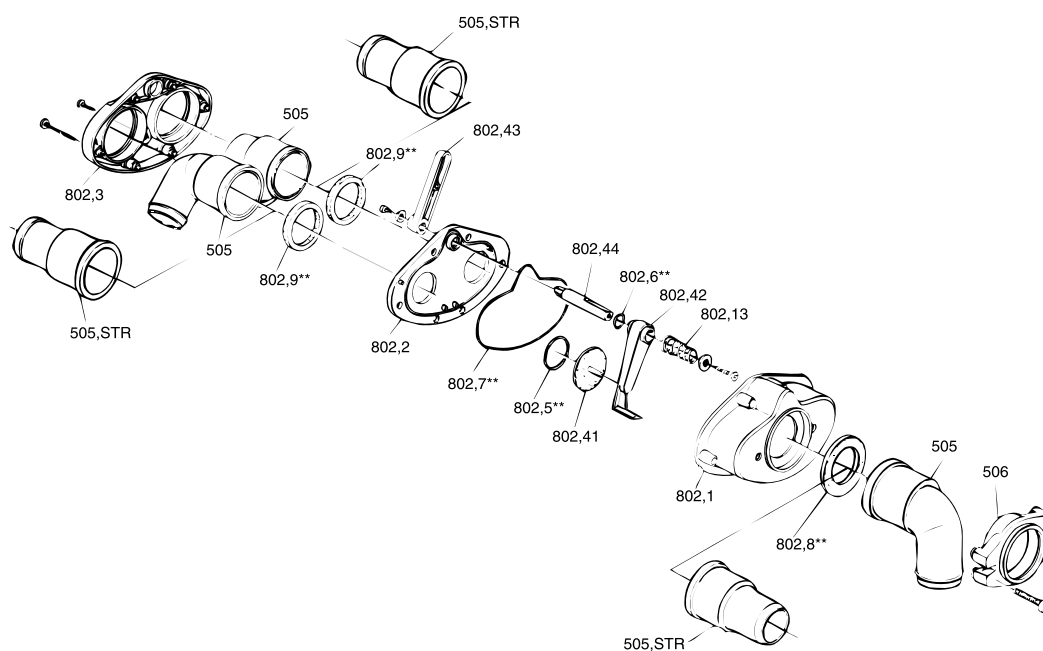
Partsno.	Description
----------	-------------

802.10**	Repairkit
----------	-----------



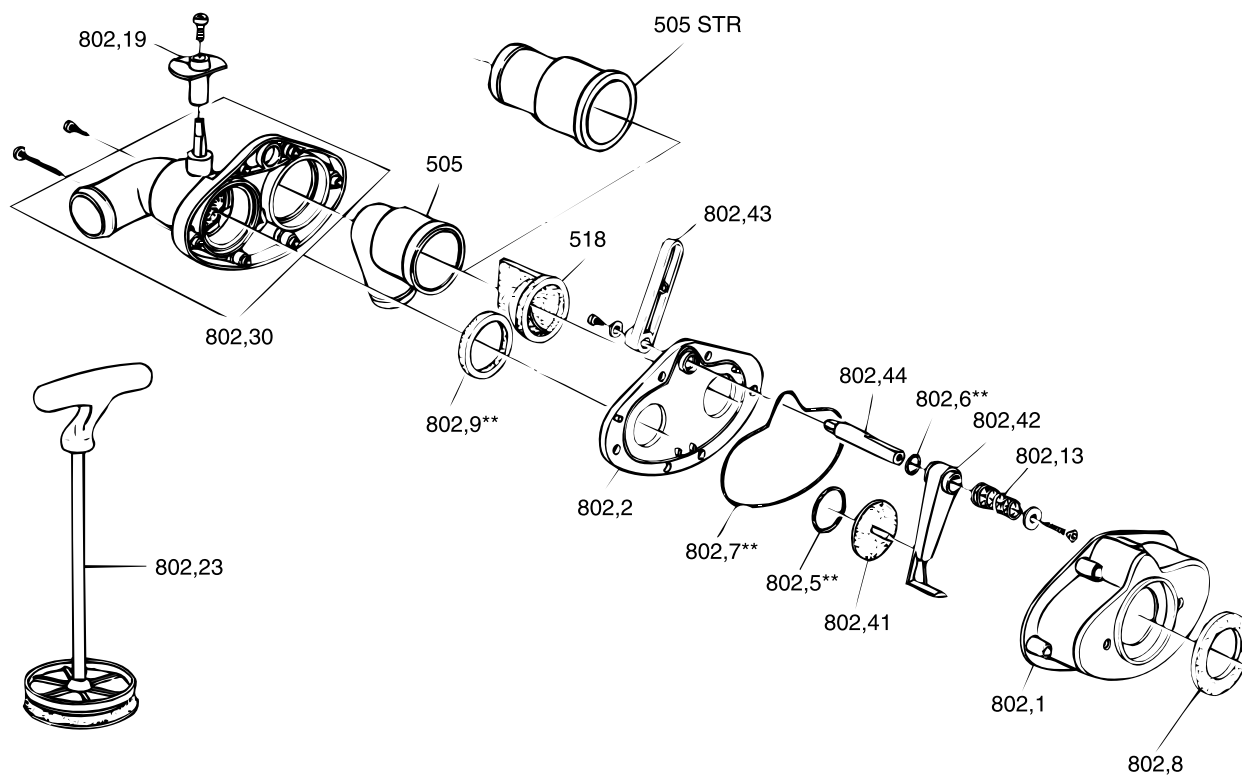
Drawing & Parts Split-up Valve 803/803.STR

Partsno.	Description
803.10**	Repairkit



Drawing & Parts Split-up Valve 804/804.STR

Partsno.	Description
804.10**	Repairkit



marine toilets - waste- / holdingtanks - pumps - valves

